

**VOLUNTEERING**  
**OPPORTUNITIES IN THE**  
**TRUST**

**July 2019**



Sheffield Health  
and Social Care  
NHS Foundation Trust

**Please contact:**

**Engagement and Experience Team**

**Email: [engage@shsc.nhs.uk](mailto:engage@shsc.nhs.uk)**

**Tel: (0114) 27 18807**



Respect Compassion Partnership Accountability Fairness Ambition

**SOME**

**VOLUNTEERING OPPORTUNITIES CURRENTLY AVAILABLE IN THE TRUST**

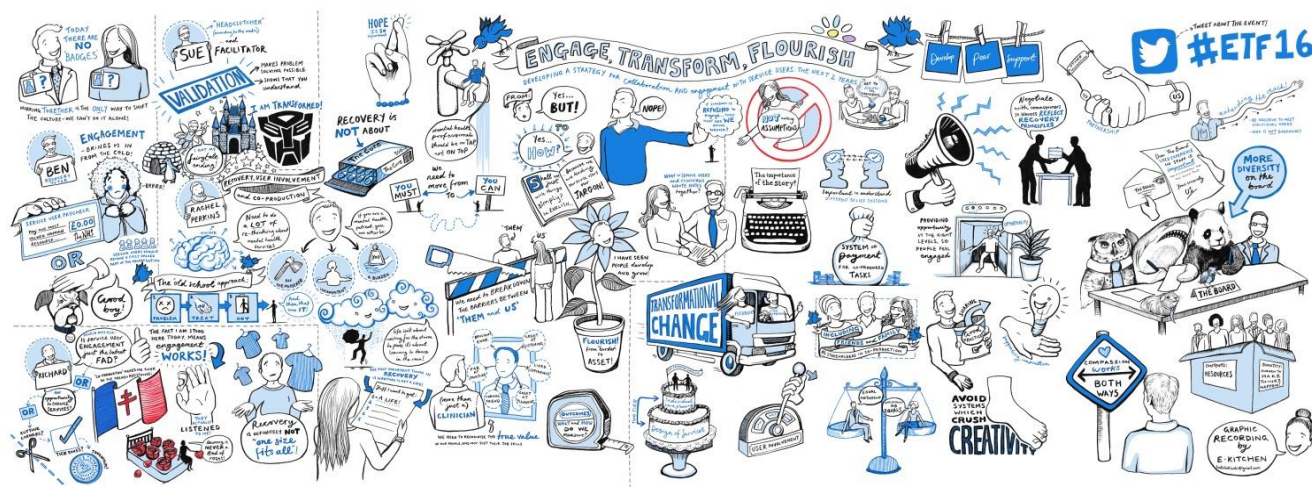
<b>Role</b>	<b>Information</b>	<b>Commitment</b>	<b>Where</b>	<b>Specific Requirements</b>
<b>Representative(s) for the Clinical Effectiveness Group</b>	It is a senior governance group which looks at issues of quality and effectiveness of care provision.	Meets monthly for 1.5 hours	Fulwood	Lived Experience as a Service User / Carer
<b>Shared Reading</b>	This is an opportunity to read great literature and poetry aloud to service users on acute wards, forensic wards and within dementia services. If you have a love of literature and poetry and enjoy being part of a group this could be for you.	Usually once a month for 1.5 hours	City-Wide	Lived experience as a Service User / Carer  Public

<b>Attendance at Service Users Engagement Group (SUSEG)</b>	SUSEG is a group established to improve the quality of service user engagement and experience, to reduce the stigma and reduce cultural distance between service users and staff and ensure that service users are engaged meaningfully at all levels in the Trust informing assurance, governance and strategy development.	Meets every other month on a Monday for 2 hours	Fulwood	Lived experience as a Service User
<b>Helping the Occupational Therapy departments</b>	This is an ideal opportunity for someone who is artistic and creative to support the Occupational Therapists within an acute care setting. You could be involved in: Pottery Walking Art Gardening Nail painting And an array of other thing.... bring your creativity and love of hobbies along and you can share them with other people	To suit you and the service	City-Wide	Lived experience as a Service User / Carer  Public
<b>Role</b>	<b>Information</b>	<b>Commitment</b>	<b>Where</b>	<b>Specific Requirements</b>
<b>Being part of a Microsystem meeting</b>	Would you like to share your experiences of being an Expert by Experience – here’s an opportunity to share your thoughts about how things could be improved when using our services.	Usually an hour a week	City-Wide	Lived experience as a Service User / Carer
<b>Attendance at Carers Strategy Implementation Group</b>	This group has been established to: - Help develop and monitor Directorate Implementation Plans of the Carers Strategy across the Trust - Help to ensure that Carers are listened to and are involved in planning and service developments - Support local Implementation Plans to be comprehensive and inclusive of carer’s needs and views - ensure that carers have opportunities to coproduce and hear the voice of experts by experience	Meets quarterly (once every 3 months) for 2 hours	Fulwood	Lived Experience as a Carer

<b>Representative(s) for National Reducing Restrictive Project</b>	Project group been set up to look at ways of reducing restrictive practice on Adult Acute and PICU wards. Attendance at meetings where incidents of reducing restrictive practice are and interventions are discussed	Meets monthly for 1 hour (project runs till April 2020)	Longley	Lived experience as a Service User who has been on an Adult Acute Ward and a Service User who has been on a PICU ward.
<b>Representative(s) on Maple's Reducing Restrictive Practice Group</b>	Currently the group is looking at a the Multi-sensory Environment (chill out / green room) on Maple to make it more usable and effective	Meets monthly for 1 hour	Longley	Lived experience as a Service User / Carer who has experience of Adult Acute Wards.
<b>Helping with volunteering newsletter</b>	We are developing a bi-annual newsletter for volunteers and would like a volunteer(s) to be involved in producing this.	Various – to suit your needs	Fulwood	A volunteer
<b>Role</b>	<b>Information</b>	<b>Commitment</b>	<b>Where</b>	<b>Specific Requirements</b>
<b>Representative(s) on Ward Project Group</b>	Currently looking at ways improving patient and staff safety, part of this work may involve getting feedback from service users on the wards	Meets every 6 weeks for 1 hour	Michael Carlisle Centre	Lived experience as a Service User
<b>Gardening at G1 and Woodland View</b>	Currently looking at involving volunteers to tidy up existing outside grounds, pruning and planting and making new relaxing areas for residents and visitors. Residents may also be involved as Occupational Therapy managed by Claire Jepson at G1 and Anthony Sharp at Woodland View.	Various	G1 Grenoside	Lived experience as a Service User / Carer  Public
<b>Being part of an Interview Panel</b>	The Trust aims to have a service user or carer on all interview panels	Various	Various – City Wide	Lived experience as a Service User / Carer who has completed

				Recruitment & Selection Training. Please get in contact if you haven't completed this & are interested in being part of our interview panels we can arrange this training for you
<b>Supporting with the administration of Service User &amp; Carer Networks / Forums / Groups</b>	Providing admin support for various service user / carer groups supported by the Trust	Various levels of commitment to suit the needs of both you and the service	Various – City wide	Lived experience as a Service User / Carer  Public
<b>Role</b>	<b>Information</b>	<b>Commitment</b>	<b>Where</b>	<b>Specific Requirements</b>
<b>Ad-hoc opportunities</b>	If you do not want to commit to a regular fixed session of volunteering you can be on a “bank” where we can keep your details on our secure database and contact you if there are one-off opportunities that come up or it may just be a survey or questionnaire sent to you via email / post (whichever is your preference)	Various	Various – City Wide	Lived experience as a Service User / Carer  Public
<b>Placement with Medical Education</b>	<ul style="list-style-type: none"> <li>- Delivering training to students.</li> <li>- Contribute to the planning, delivery and evaluation of training for Medical and Physician Associate students on psychiatry placement.</li> <li>- To share ideas about ways of achieving Recovery goals, drawing on personal experiences and a range of coping, self-help and self-management techniques.</li> </ul>	Various	Fulwood	Lived experience as a Service User / Carer

<p><b>Accompanying service users on trips</b></p>	<p>Ad-hoc, can be taking service users shopping, to football matches etc</p>	<p>Various/Ad-hoc</p>	<p>Buckwood View</p>	<p>Lived experience as a Service User / Carer</p> <p>Public</p>
<p><b>Supporting Quality of Experience Survey Collection</b></p>	<p>The Quality of Experience Survey is a questionnaire to understand people's experience of their time on the ward to inform future improvements.</p>	<p>Various</p>	<p>Longley / Michael Carlisle Centre</p>	<p>Lived Experience as a Service User on an acute ward / Carer for someone who has been on an acute ward</p>
<p><b>Providing art-work for publicity</b></p>	<p>Ad-hoc opportunities to provide artwork for fliers, leaflets, posters etc</p>	<p>Various – to suit your needs</p>	<p>N/A</p>	<p>None</p>



This list of opportunities is not exhaustive.... please get in contact if you have any ideas of what you would like to do or even if you don't know – we are here to talk to you and find out what's best for you and our services!

Respect   Compassion   Partnership   Accountability   Fairness   Ambition